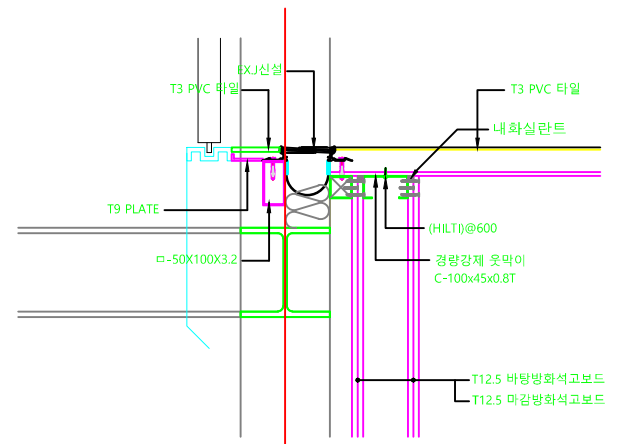
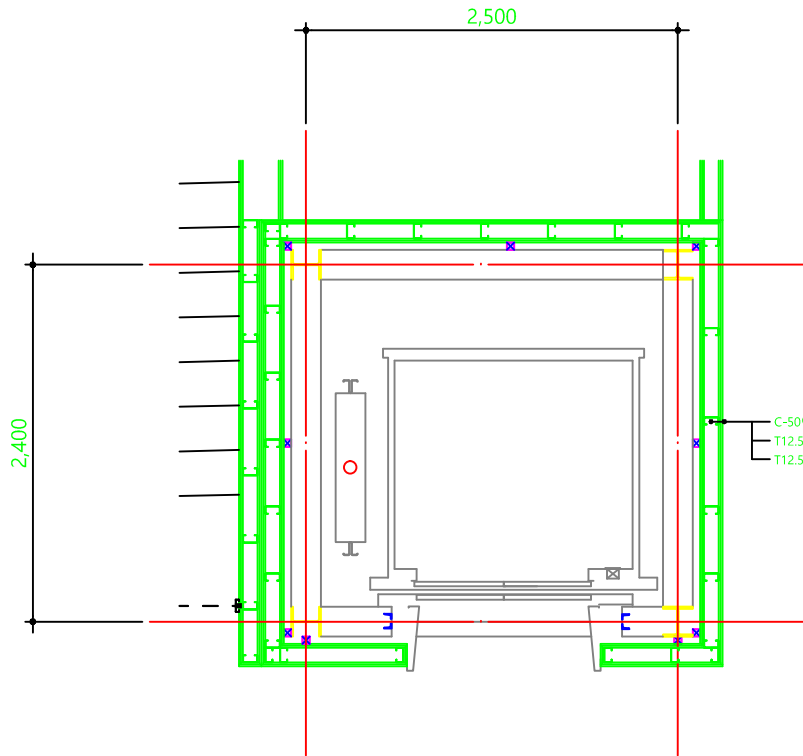


KEY PLAN

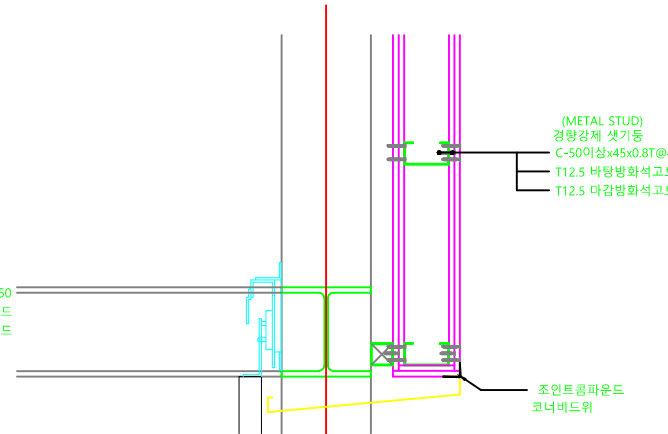


*엘리베이터 출입구 바닥은 중량물(화물)이동이 많은 것을 고려하여 내구성있게 시공할 것.

3 "A"부분상세도
축척: NONE

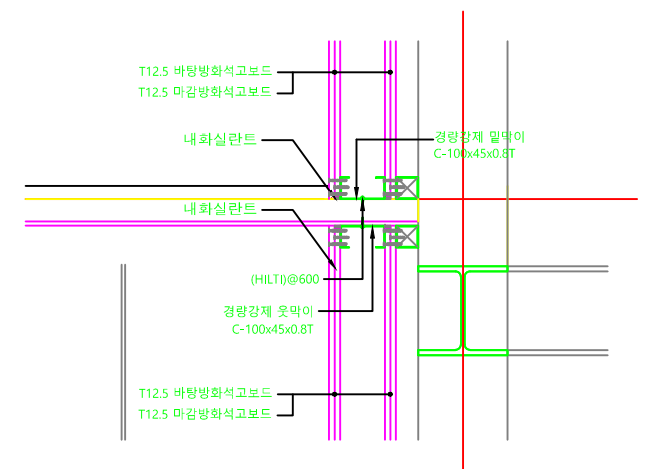


1 ELEV. SHAFT 확대평면도
축척: 1/50



4 "B"부분상세도
축척: NONE

2 ELEV. SHAFT 단면상세도(변경후)
(D-41~D-39방향)
축척: 1/50



5 "C"부분상세도
축척: NONE