



설계명
PROJECT TITLE

인천항 크루즈터미널
신축공사

건축주
CLIENT

**인천항만공사**
INCHEON PORT AUTHORITY

설계사무소
DESIGN OFFICE

**EGA**
ARCHITECTURE
(주)이가중합건축사사무소
EGA Architecture CO., Ltd.
T:02-3446-8885 , F:02-3446-8836

설계사무소
DESIGN OFFICE

NOTE.

철골 내화피복 : 1시간
철골 내화피복은 내화페인트 적용.

No.	Date	Revision	Description	Grid.
△				
△				
△				
△				

No.	Date	Revision	Description	Grid.
최종승인날짜 APPROVAL DATE 승인 APPROVED BY				
2016.03				
프로젝트번호 PROJECT CODE 검토-2 CHECKED BY				
EP15-0076				
전문분야 SUBJECT 검토-1 CHECKED BY				
건축				
설계단계 DESIGN PHASE 작성 Drawn By				
중간설계				

협력설계
CONSULTANT

도면명
DRAWING TITLE

ES-#1,#2 및 계단-1
평단면상세도

축척
SCALE

A1: 1/40 A3: 1/80

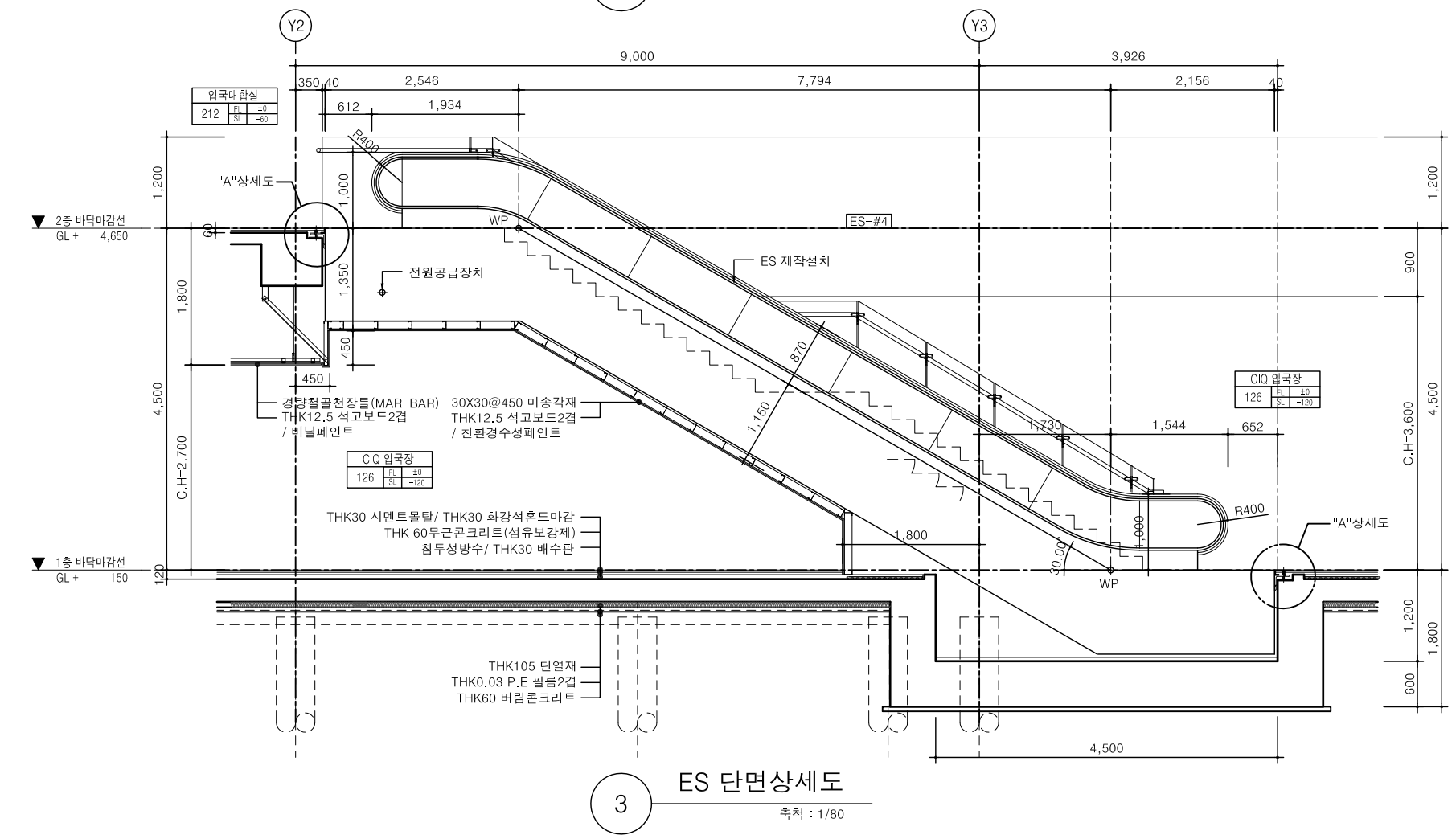
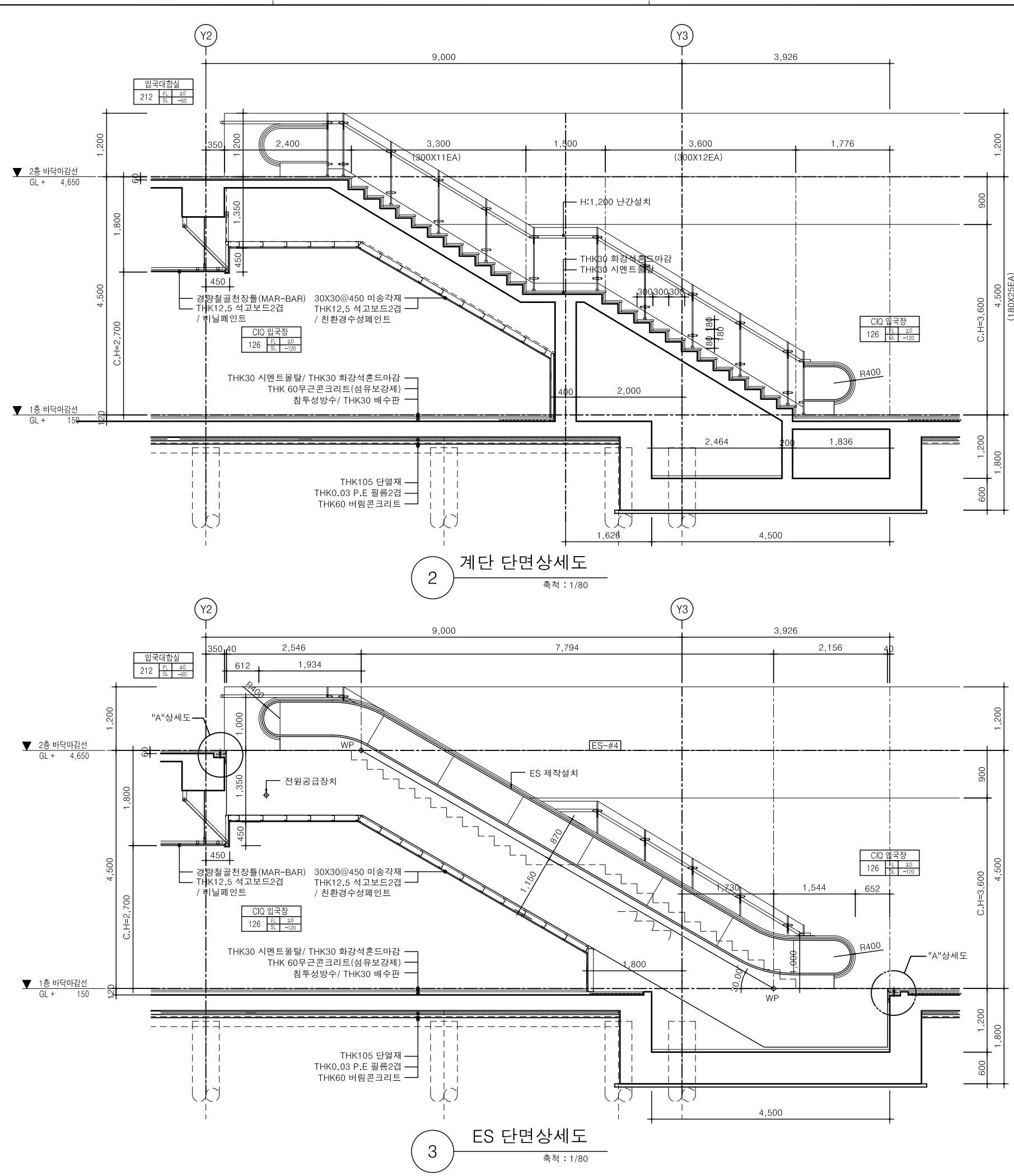
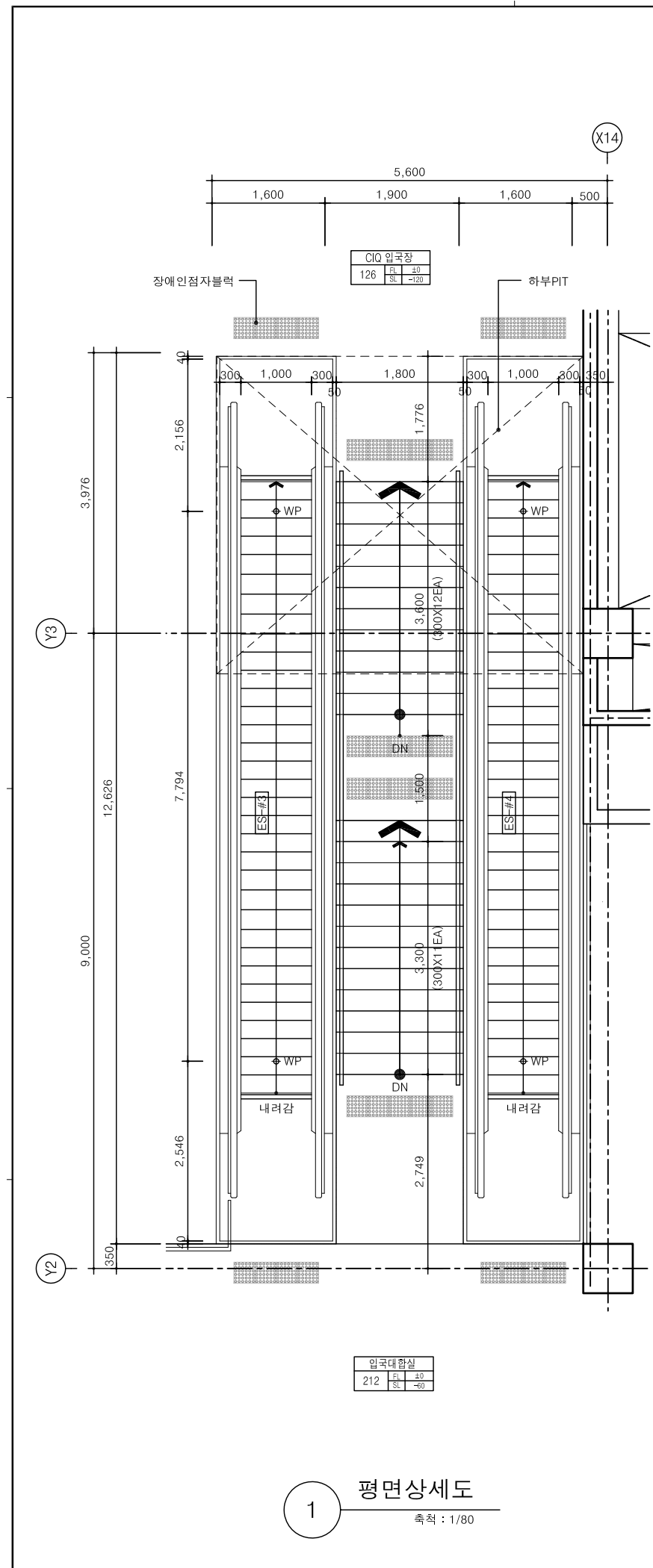
도면번호
DRAWING NO.

A-441

일련번호
SHEET NO.

Rev.

No. △



상계명
PROJECT TITLE

인천항 크루즈터미널
신축공사

건축주
CLIENT

인천항만공사
INCHEON PORT AUTHORITY

설계사무소
DESIGN OFFICE

EGA
ARCHITECTURE

(주)이가용건축사사무소
EGA Architecture CO., Ltd.

T:02-3446-8885, F:02-3446-8836

설계사무소
DESIGN OFFICE

NOTE.

철골 내화피복 : 1시간
철골 내화피복은 내화페인트 적용.

No.	Date	Revision	Description	Grid.
△				
△				
△				
△				

최종승인날짜 APPROVAL DATE 승인 APPROVED BY

2016.03

프로젝트번호 PROJECT CODE 검토-2 CHECKED BY

EP15-0076

전문분야 SUBJECT 검토-1 CHECKED BY

건축

설계단계 DESIGN PHASE 작성 Drawn By

중간설계

협력설계
CONSULTANT

도면명
DRAWING TITLE

ES-#3,#4 및 계단-2
평단면상세도

축척
SCALE A1: 1/40 A3: 1/80

도면번호
DRAWING NO.

A-442

일련번호
SHEET NO.

Rev.
No. △